


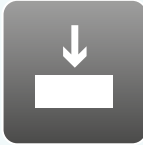

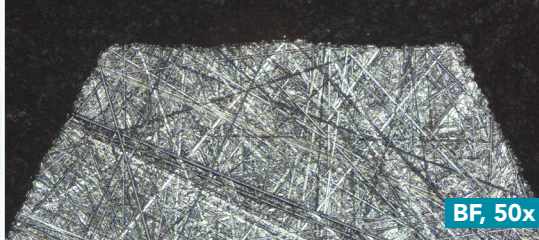
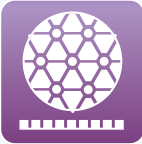


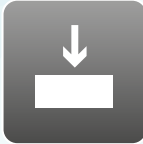





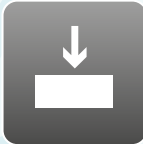





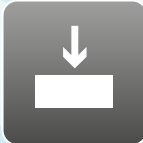




# Aka-Brief #18 表面硬化钢

1						
	Piatto 220	水	300 RPM	30 N	磨平	
						BF, 50x
2						
	Allegran 3	DiaUltra 9 μm	150 RPM	35 N	2:30 min	
						BF, 50x
3						
	Ramda	DiaUltra 3 μm	150 RPM	30 N	2 min	
						BF, 50x
4						
*	Napal	DiaUltra 1 μm	150 RPM	20 N	30 sec	
						BF, 50x

图中所示时间与压力均适用于标准的300毫米制样系统和40毫米直径样品。

使用250毫米制样系统时，时间相应增加30%；使用200毫米制样系统时，时间相应增加 100%。

所使用的压力应随样品尺寸的增大和减小而进行相应的增大和减小。

样品夹/样品移动盘的转速为150转/分钟。

样品制备所需的时间和压力可能根据制样设备的不同而有所变化。

\*最后一步是可选的。

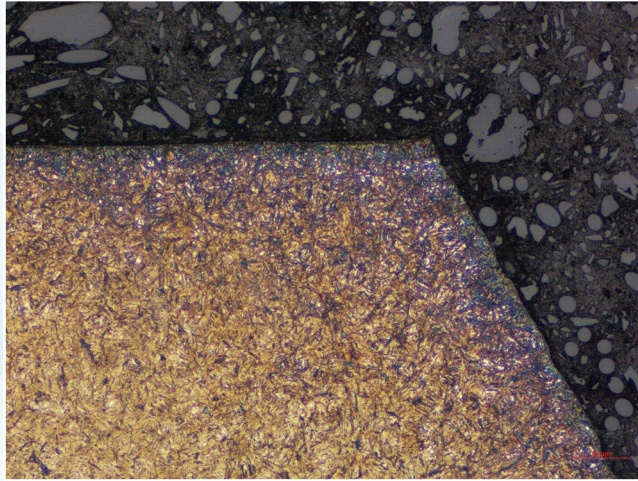


# Aka-Brief #18 表面硬化钢

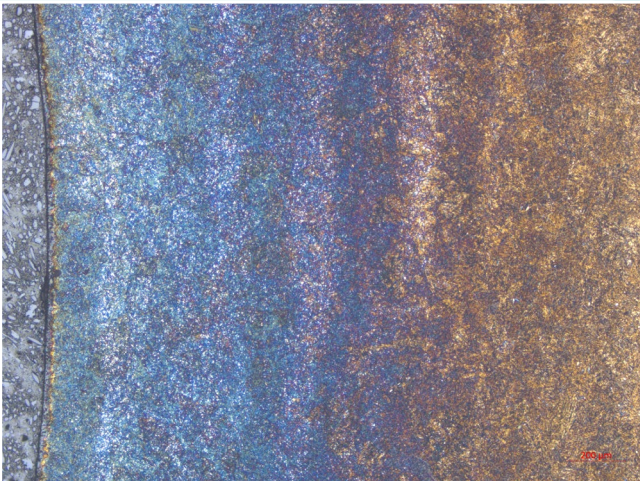
## 最终制样结果



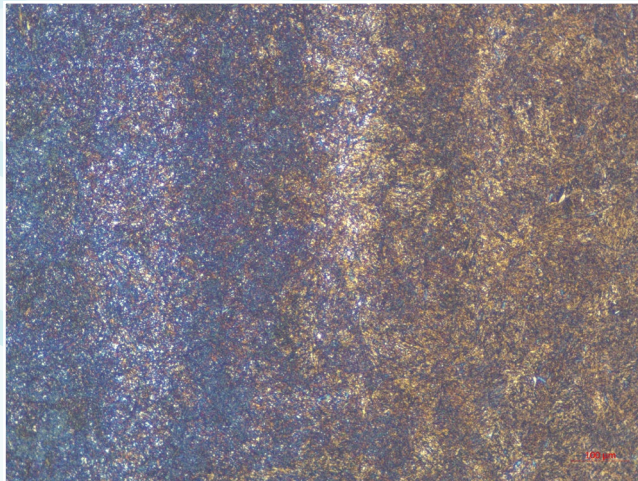
3%硝酸腐蚀，明场像，50倍



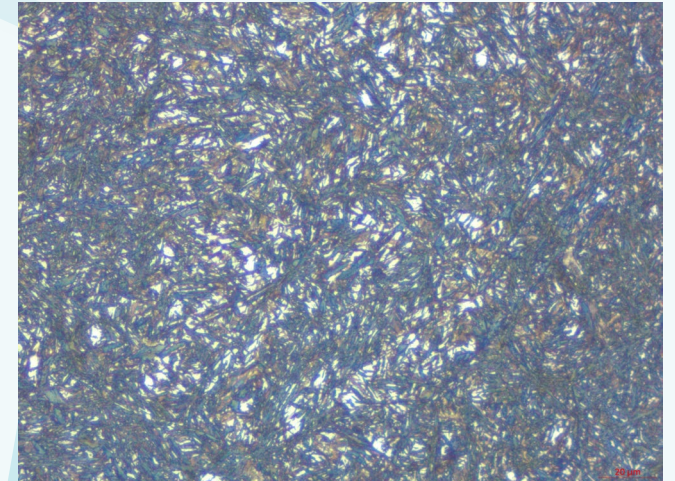
3%硝酸腐蚀，明场像，200倍



3%硝酸腐蚀，明场像，50倍



3%硝酸腐蚀，明场像，100倍



3%硝酸腐蚀，明场像，500倍