


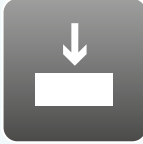

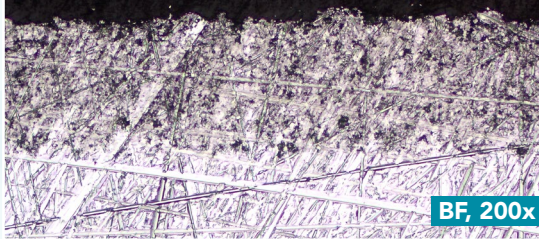
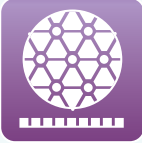


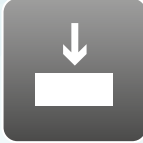

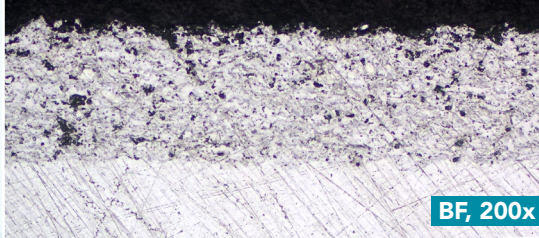



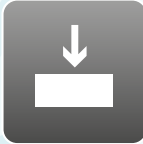

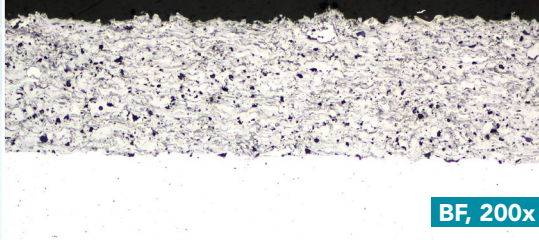



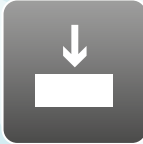

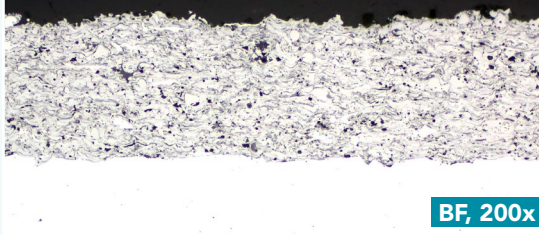


Aka-Brief #5 喷涂金属/复合材料涂层零件

1						 BF, 200x	
	Piatto 220+	水	300 RPM	30 N	磨平		
2							 BF, 200x
	Allegran 3	DiaUltra 6 μm	150 RPM	35 N	3:30 min		
3						 BF, 200x	
	Silk	DiaUltra 3 μm	150 RPM	30 N	2:30 min		
4						 BF, 200x	
	Chemal*	Colloidal Silica 50 nm Alkaline	150 RPM	15 N	1 min		

图中所示时间与压力均适用于标准的300毫米制样系统和40毫米直径样品。

使用250毫米制样系统时，时间相应增加30%；使用200毫米制样系统时，时间相应增100%。

所使用的压力应随样品尺寸的增大和减小而进行相应的增大和减小。

样品夹/样品移动盘的转速为150转/分钟。

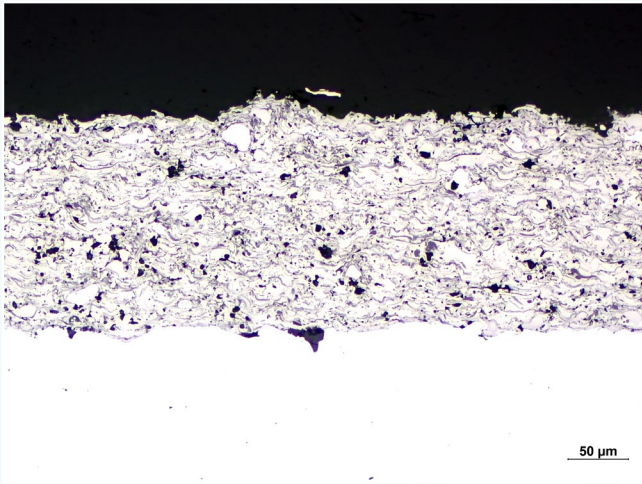
样品制备所需的时间和压力可能根据制样设备的不同而有所变化。

*开始氧化抛光之前，加水使整片抛光布湿透，样品夹/样品移动盘下移接触到抛光布时，停止加水。在氧化抛光的最后10秒，加水冲洗样品和抛光布。

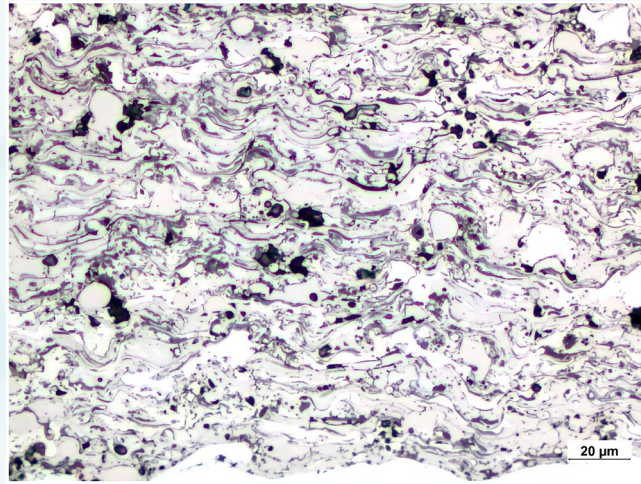


Aka-Brief #5 喷涂金属/复合材料涂层零件

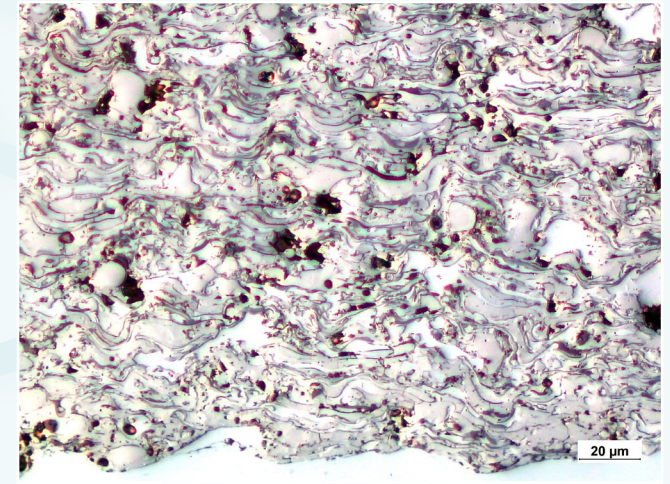
最终制样结果



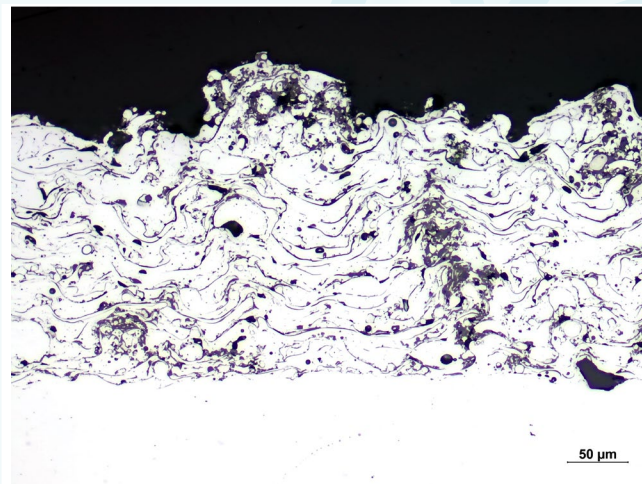
带CrC/NiCr细颗粒涂层的不锈钢，明场像，200倍



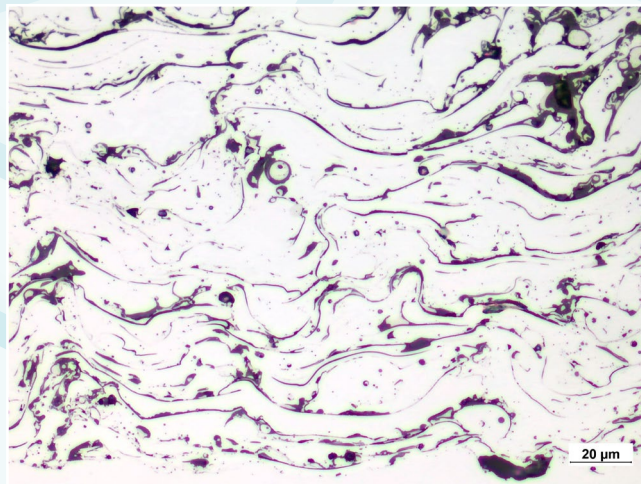
带CrC/NiCr细颗粒涂层的不锈钢，明场像，500倍



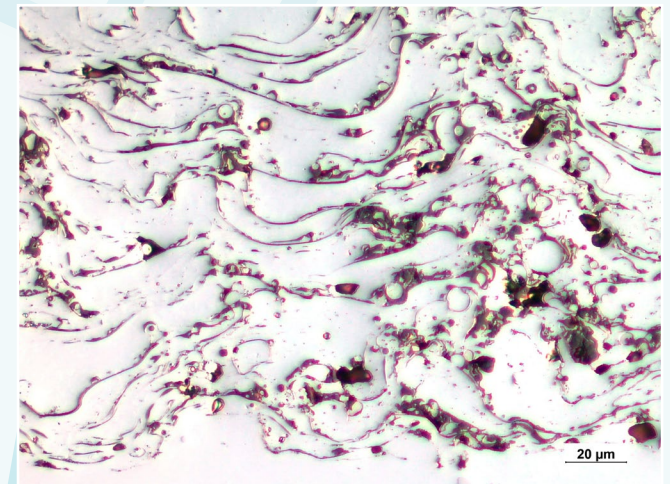
带CrC/NiCr细颗粒涂层的不锈钢，微分干涉衬度像，500倍



带钴合金涂层的不锈钢，明场像，200倍



带钴合金涂层的不锈钢，明场像，500倍



带钴合金涂层的不锈钢，微分干涉衬度像，500倍